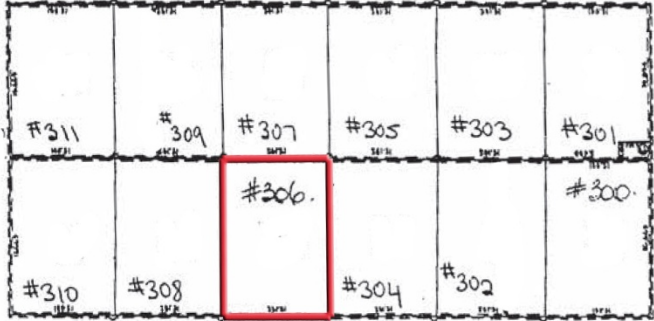




Intelligent
Real Estate Solutions

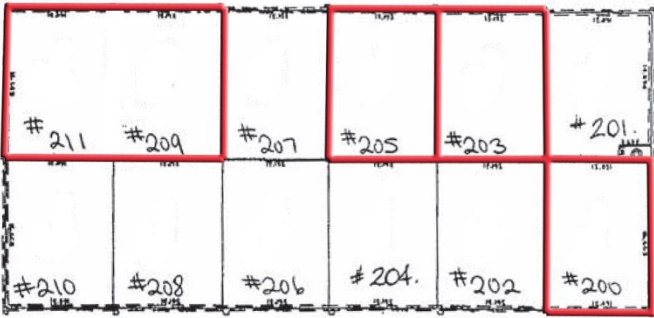
Current Availabilities Mufford Industrial Park

20626 – 20630 Mufford Crescent, Langley British Columbia



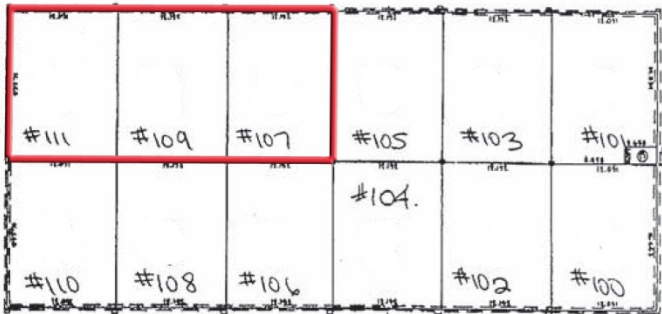
20630 Mufford Crescent

Unit 306: 2,200 sq. ft.



20628 Mufford Crescent

Unit 209/211: 4,400 sq. ft.
Unit 203: 2,200 sq. ft.
Unit 205: 2,200 sq. ft.
Unit 200: 2,200 sq. ft.



20626 Mufford Crescent

Unit 111/109/107: 6,600 sq. ft.

Proudly owned and managed by:

