



For Sublease

University of Lethbridge Tower

10707 - 100 Avenue
Edmonton, Alberta

partnership.
performance.



Intelligent
Real Estate Solutions



PROPERTY HIGHLIGHTS

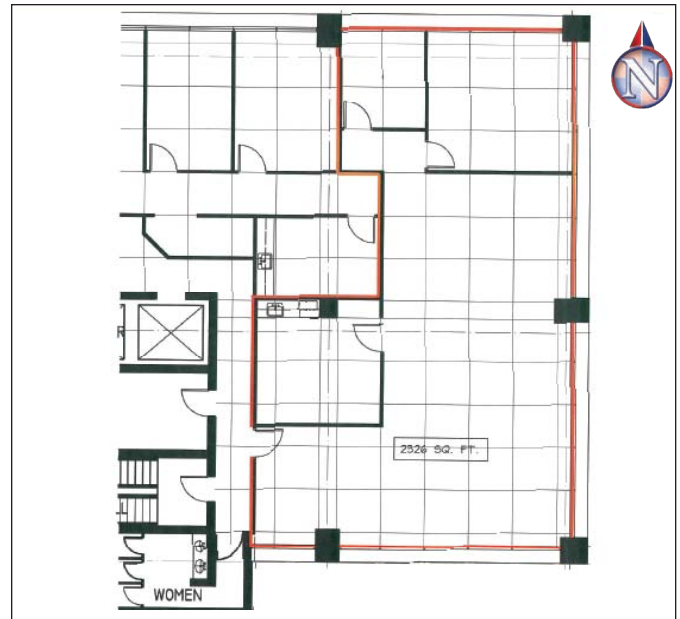
- Professional office building located in the heart of the Government District
- Conveniently located with close proximity to Jasper Avenue and 109 Street
- Premises recently built out with high quality finishing
- Only one block away from an LRT station
- In addition to its underground parkade, the building is surrounded by numerous parking lots

University of Lethbridge Tower 10707 - 100 Avenue, Edmonton For Sublease

Property Details

- Premises:** Suite 610 - 2,326 square feet
- Available:** Immediately
- Expiry Date:** August 30, 2012
- Net Rent:** Approximately \$18.00 per square foot
- Occupancy Costs:** \$12.46 per square foot (2009)
- Parking:** 2 underground parking stalls at market rates, currently \$200 per stall per month

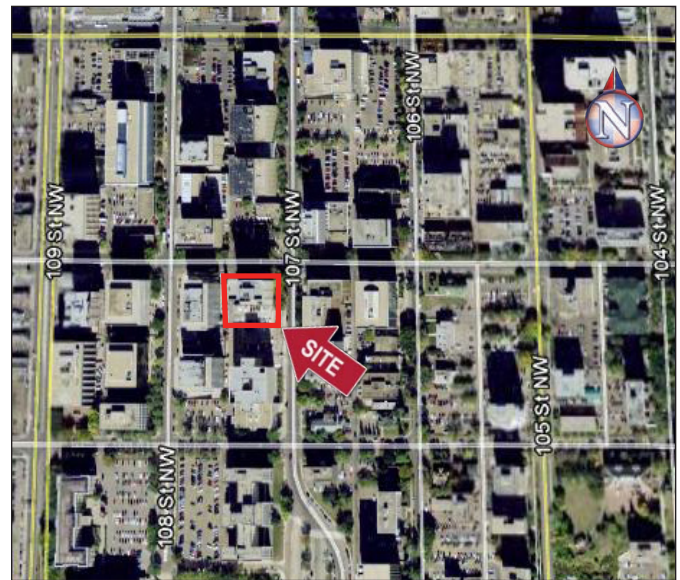
Floor Plan



Interior Photo



Location Map



For more information, please contact Avison Young at:

Avison Young

2500 Scotia Place, Tower 1, 10060 Jasper Avenue
Edmonton, AB T5J 3R8

T 780.428.7850

F 780.424.5815

E gm.edmonton@ay-ab.com

W avisonyoung.com

Avison Young Real Estate Alberta Inc.



Intelligent
Real Estate Solutions



Avison Young is the real estate partner business trusts for intelligent, integrated solutions. We deliver results that are aligned with your strategic business objectives, supporting real estate initiatives that add value and build competitive advantage for your organization.

Avison Young Offices

Vancouver Mississauga

Edmonton Ottawa

Calgary Montreal

Regina Quebec City

Winnipeg Halifax

Toronto Chicago