



For Sub-Lease

Broadmoor Place III

2301 Premier Way
Sherwood Park, Alberta

partnership.
performance.

**AVISON
YOUNG**

Intelligent
Real Estate Solutions



PROPERTY HIGHLIGHTS

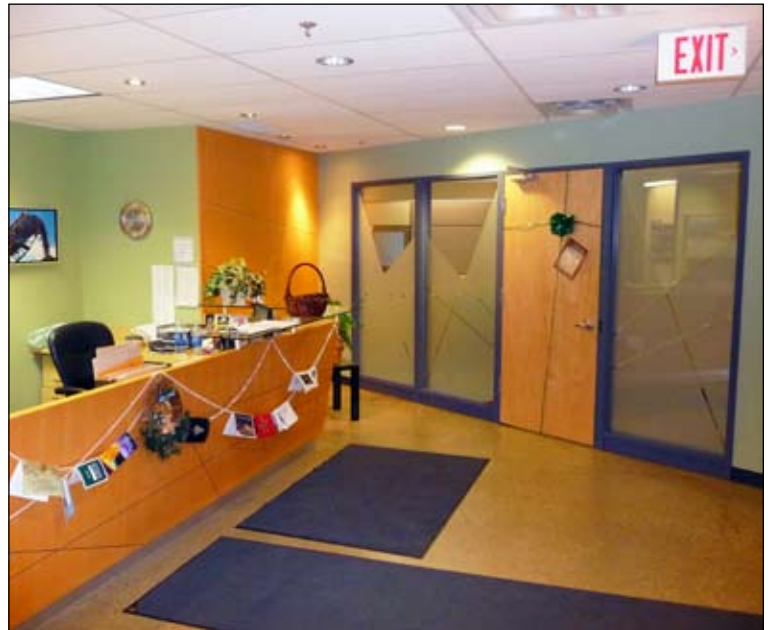
- Fully developed office space available immediately
- Large boardroom and conference facilities
- Exterior building signage available
- Affordable rental package available

Broadmoor Place III 2301 Premier Way, Edmonton, Alberta

Leasing Details

- Space available:** 12,558 sq. ft.
- Floor:** 2nd Floor
- Sub-lease Expiry:** September 29, 2013
- Asking Rate:** \$13.00 per square foot
- Occupancy Costs:** \$5.94 plus janitorial.
Utilities included
- Parking:** 35 energized surface stalls
free of charge

Floor Plan



Avison Young is the real estate partner business trusts for intelligent, integrated solutions. We deliver results that are aligned with your strategic business objectives, supporting real estate initiatives that add value and build competitive advantage for your organization.

Avison Young Offices

| | |
|-------------|-----------------|
| Vancouver | Mississauga |
| Edmonton | Ottawa |
| Calgary | Lethbridge |
| Montreal | Regina |
| Quebec City | Winnipeg |
| Halifax | Toronto |
| Chicago | Washington, DC. |
| Atlanta | |

For more information, please contact Avison Young at:

Avison Young

2500 Scotia Place, Tower 1, 10060 Jasper Avenue
Edmonton, AB T5J 3R8

T 780.428.7850
F 780.424.5815
E gm.edmonton@ay-ab.com
W avisonyoung.com

Avison Young Real Estate Alberta Inc.

Karnie Vertz

T 780.429.7551
F 780.424.5815
E kvertz@ay-ab.com



Intelligent
Real Estate Solutions

